

UK HEAD OFFICE

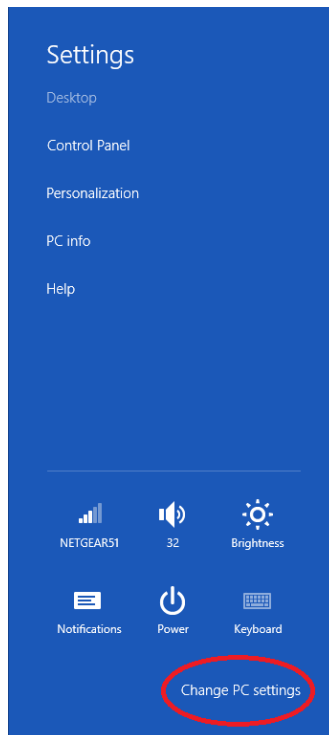
Avalon House,
Somerton Business Park,
Somerton, Somerset, UK TA11 6SB
Tel: +44 (0) 1458 270000
www.avalonsciences.com

Company no. 2147892
Registered in England & Wales

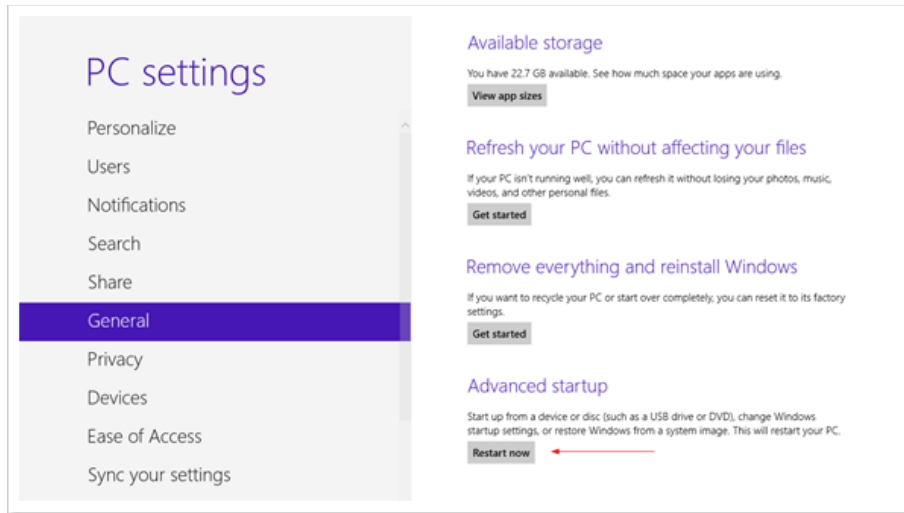
Disabling Driver Signature Enforcement in Windows 8

Windows 8 has a security feature which will not allow you to install Unsigned Drivers. If you want to install FTDI USB drivers for the GSP or RSS-2, you will have to disable the Driver Check Enforcement on your Computer.

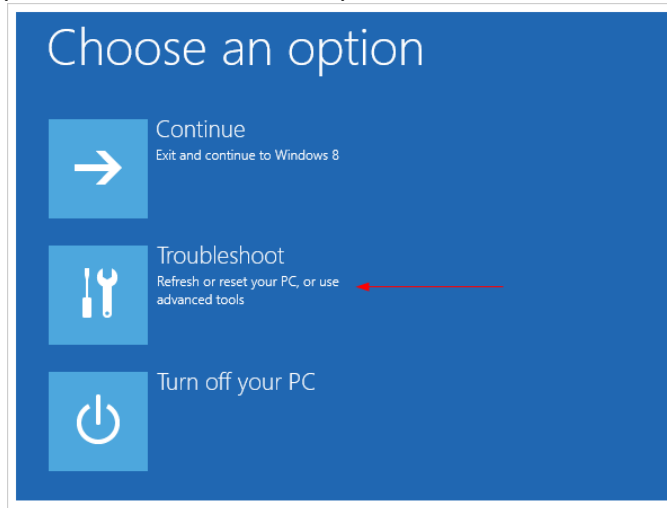
First, press "win + I" to launch the charm bar, and click "Change PC Settings" at the bottom.



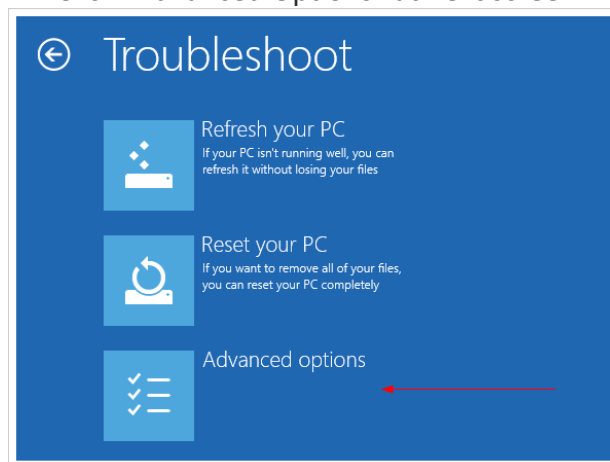
Then, go to "General", and scroll to the bottom of the page, click "Restart Now" button under "Advanced Startup" section.



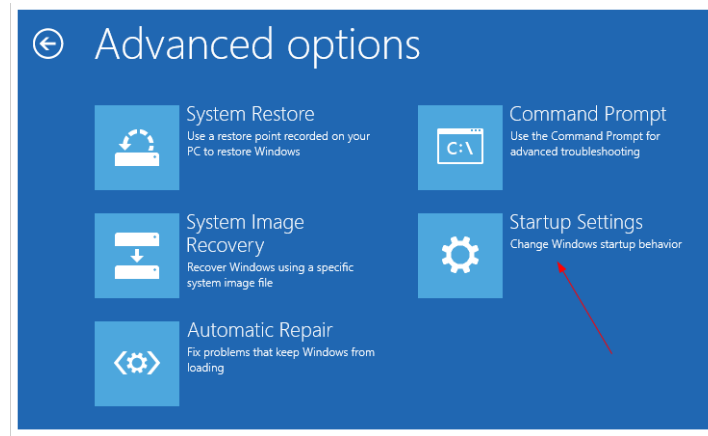
The computer reboots to a "Startup Menu", then click "Troubleshoot"



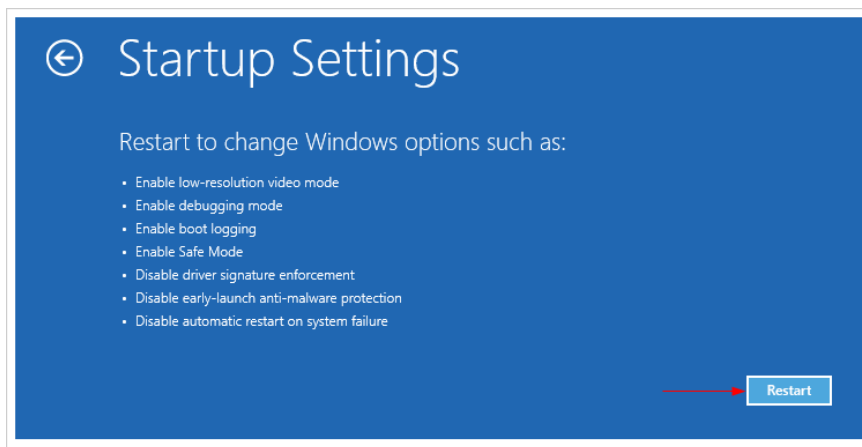
Click "Advanced Options" at next screen



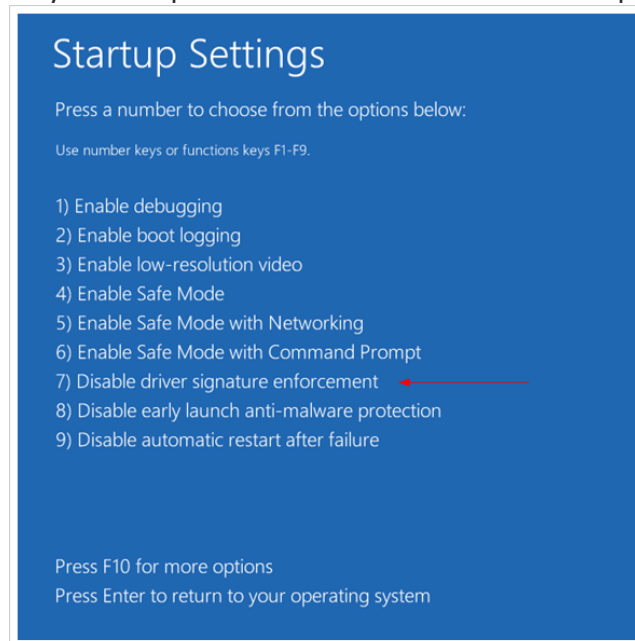
Click "Startup Settings" at next screen



Click "Restart button" at next screen

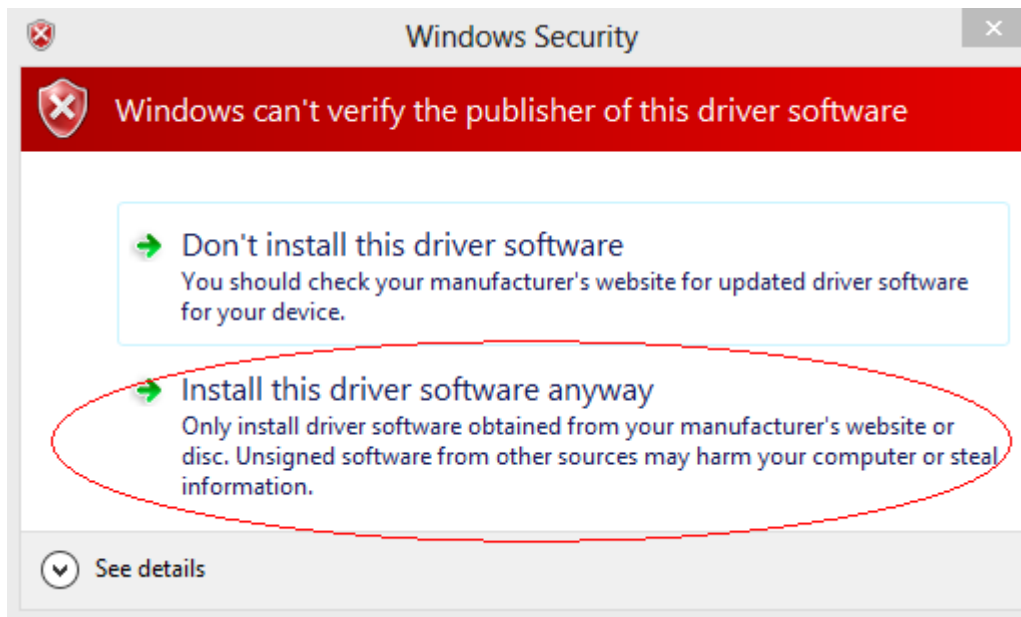


When your computer reboots another menu will appear.



Item# 7 is to "Disable driver signature enforcement".

Press number 7 or F7 to continue booting to Windows 8 with digital signature enforcement disabled. Now when you install the driver you will get the following prompt, select "Install this driver software anyway"



To re-enable Driver Signature Enforcement, simply